

Leased



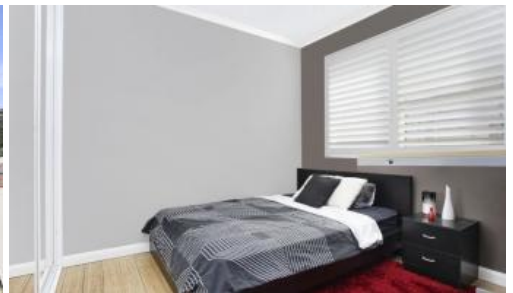
WIESNERPROPERTY

HOLDING DEPOSIT RECEIVED

For more properties visit

<https://www.wiesnerproperty.com/rent>

Unit 6, 2 Renny Lane, Paddington



HOLDING DEPOSIT TAKEN!! COSY & CONVENIENT 2 BED APARTMENT WITH UNDERCOVER PARKING & STORAGE

WITH RESPECT TO THE LATEST GOVERNMENT'S COVID-19 RESTRICTIONS WE WILL BE CONDUCTING OPEN HOMES AND PRIVATE APPOINTMENTS WITH MANDATORY FACE MASKS, SANITISATION, QR CODE CHECK INS, AND 1 PERSON PER 4SQM. PLEASE SUBMIT AN ENQUIRY OR CONTACT THE AGENT TO BE KEPT UP TO DATE WITH INSPECTION TIMES AND REGISTER YOUR ATTENDANCE FOR VIEWINGS.

This two-bedroom light filled Security apartment offers a low maintenance lifestyle in the heart of Paddington. Boasting well-presented interiors, the apartment features a modern kitchen with stone benchtop, timber floorboards, plantation shutters throughout and built-in-robos. The apartment is in a boutique block of nine units and is within walking distance to Centennial Park, Oxford Street, bars and eateries and Allianz Stadium.

Features

- Two bedrooms both with built-ins
- Secure block of 9 apartments
- Floorboards & plantation shutters throughout
- Modern kitchen and light filled living room
- Shared laundry facilities
- Quiet and convenient location in the heart of Paddington

🛏 2 🚿 1 🚗 1

Agent Details

Katy Contreras - 0431 102 211
Jeremy Wiesner - 0411 099 199

Office Details

Wiesner Property
20 Transvaal Ave Double Bay, NSW,
2028 Australia
0411 099 199



WIESNERPROPERTY

Facts:

Availability: NOW!

Laundry Facilities: Shared

Unfurnished/Furnished: Unfurnished

Cooking: Electric

Air conditioning: no

Lifestyle: Approximately 16 minute drive to the CBD, moments to shops & transport

We do not guarantee or give any warranty as to the accuracy provided, interested parties must rely on their own enquires.

The above information provided has been furnished to us by the vendor/s. We have not verified whether or not that information is accurate and do not have any belief in one way or the other in its accuracy. We do not accept any responsibility to any person for its accuracy and do no more than pass it on. All interested parties should make and rely upon their own inquiries in order to determine whether or not this information is in fact accurate.