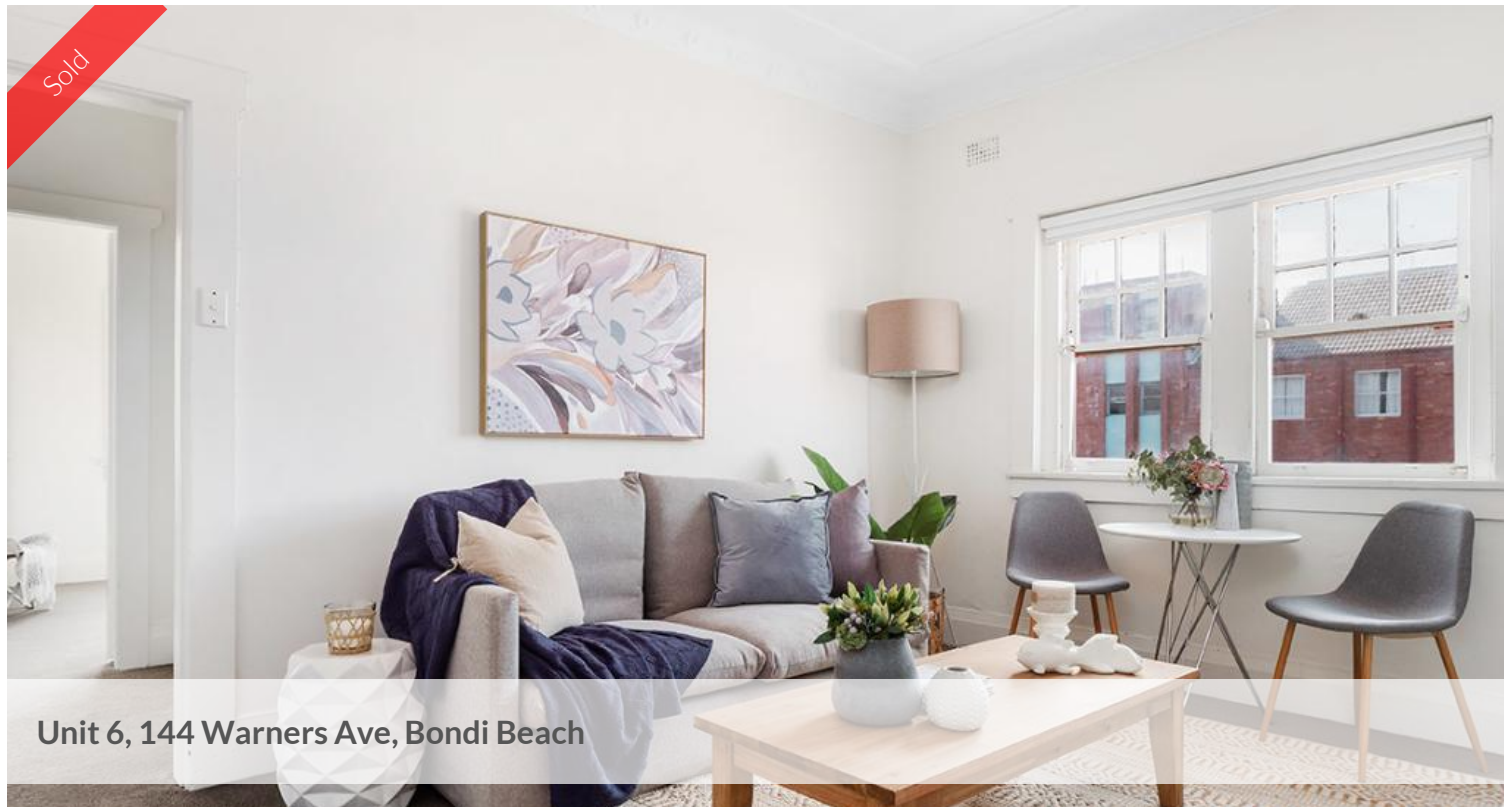


Sold



Unit 6, 144 Warners Ave, Bondi Beach



ART DECO - BEACHSIDE PAD

Set directly on Bondi Beach this 1-bedroom apartment is a sun-drenched sanctuary in a premier position. Located on first floor of the Art Deco 'Lexington', security building of only 12, it offers the best of this world-class position on a beautiful platter. This apartment is flooded with natural light, large sunny bedroom, extra high ceilings.

This boutique apartment presents the perfect sand-and-surf lifestyle in Sydney's most sought-after beachside suburb. Popular with the body conscious, it offers yoga, cross fit, gyms, kale juice and is a leisurely stroll to Bondi Beach, North Bondi Surf Lifesaving Club and a handy selection of cafes, restaurants, bars and boutique stores. Ten minutes to Bondi Junction Westfield or Rose Bay's cafes and pubs. A great chance for investors or equally perfect for owner-occupiers wishing to soak up the best of this famous location.

- First floor of Art Deco block looking directly to sand and surf
- Large bedroom flooded with natural light
- Original kitchen & bathroom
- High ceilings, classic Art Deco block, security building
- Seconds to the sands of Bondi, cafes, shopping, all amenities
- Convenient bus access at doorstep, easy walk to famed eateries
- Incredible chance for both investors + owner-occupiers alike

We do not guarantee or give any warranty as to the accuracy provided, interested parties must rely on their own enquires.

1 bed 1 bath

Agent Details

Jeremy Wiesner - 0411 099 199

Office Details

Wiesner Property
20 Transvaal Ave Double Bay, NSW,
2028 Australia
0411 099 199



WIESNERPROPERTY

The above information provided has been furnished to us by the vendor/s. We have not verified whether or not that information is accurate and do not have any belief in one way or the other in its accuracy. We do not accept any responsibility to any person for its accuracy and do no more than pass it on. All interested parties should make and rely upon their own inquiries in order to determine whether or not this information is in fact accurate.