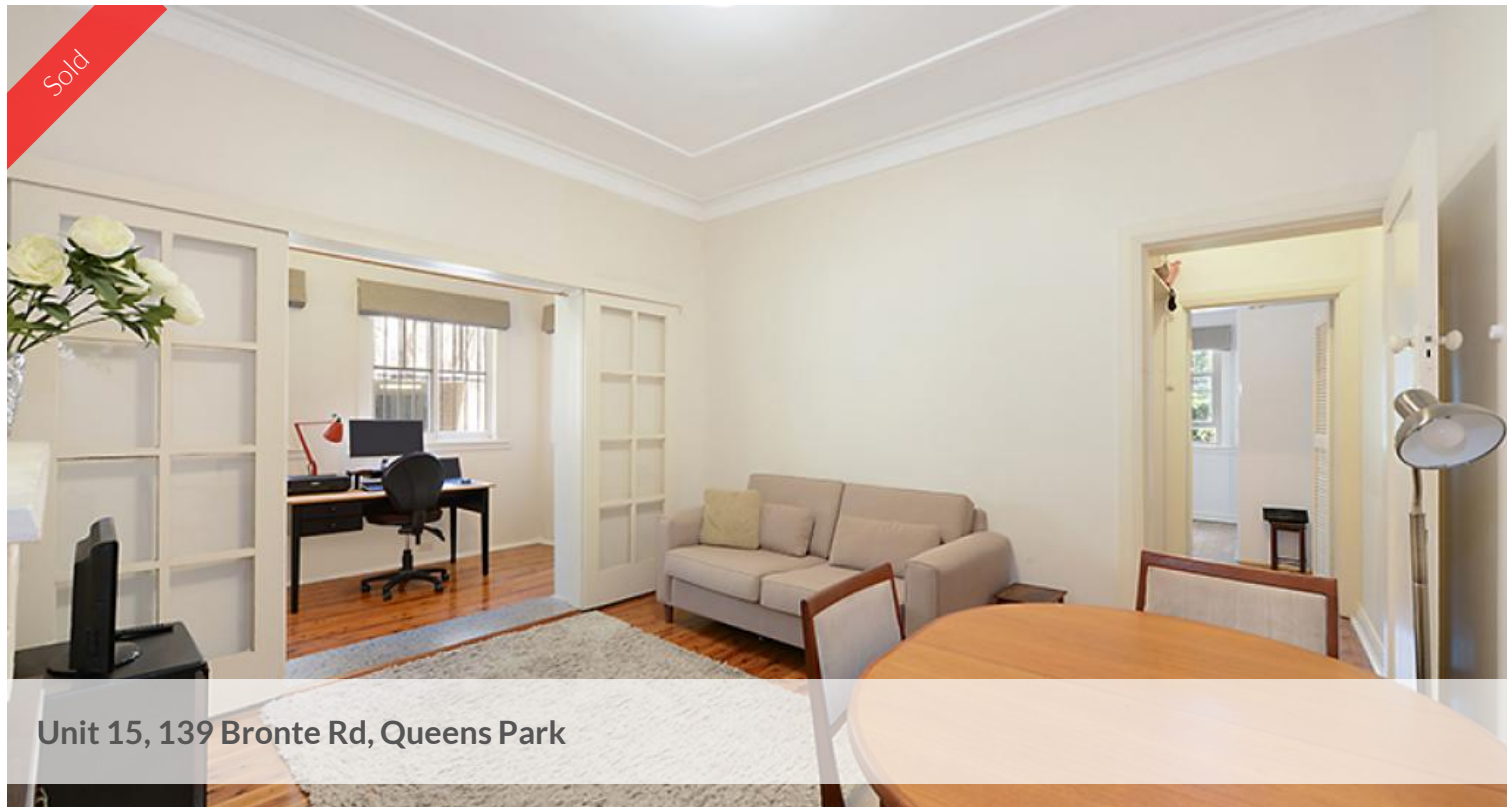


Sold



Unit 15, 139 Bronte Rd, Queens Park



Boutique Charm In A Prized Location



Full of character and boasting similar proportions & design of that of a semi, this well-presented art deco unit is situated in a low rise, conveniently located block, only walking distance to parks, cafes and the shopping district.

Peacefully positioned to the rear of the building, it offers great natural light, 1bedroom + sunroom or 2nd bedroom, a huge eat in gas kitchen, a large living room, internal laundry, polished floorboards throughout and bathroom with bath.

This charming apartment is priced to sell and is a must to inspect. Ideal for the first home buyer or investor. Located between Westfield's retail precinct and Charing Cross village, close proximity to Centennial Park and Bondi Beach makes an ideal market entry just 450m to Bondi Junction station with cafes near by.

- Quiet rear setting, newly refreshed, ready to move in
- Sunny main bedroom with loads of storage
- Spacious living room, high ceilings, freshly painted
- Large dine-in gas kitchen with internal laundry
- Updated bathroom, classic sash windows, picture rails
- Easy level stroll to Westfield, 650m walk to Queens Park
- Close proximity to Bondi Beach and Centennial Park

We do not guarantee or give any warranty as to the accuracy provided, interested parties must rely on their own enquires

 1  1

Agent Details

Jeremy Wiesner - 0411 099 199

Office Details

Wiesner Property
20 Transvaal Ave Double Bay, NSW,
2028 Australia
0411 099 199



WIESNERPROPERTY

The above information provided has been furnished to us by the vendor/s. We have not verified whether or not that information is accurate and do not have any belief in one way or the other in its accuracy. We do not accept any responsibility to any person for its accuracy and do no more than pass it on. All interested parties should make and rely upon their own inquiries in order to determine whether or not this information is in fact accurate.